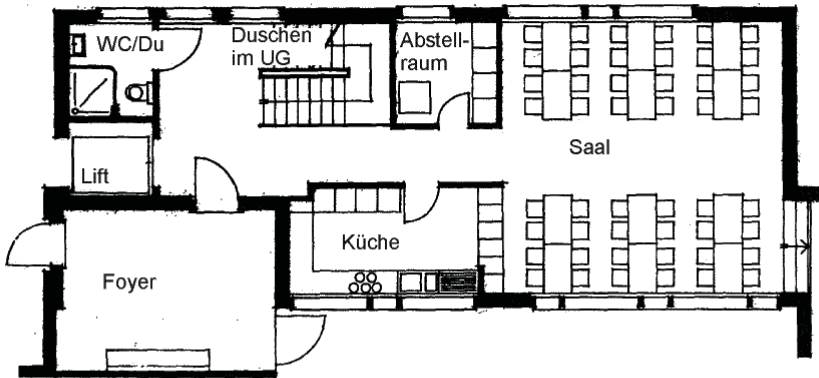
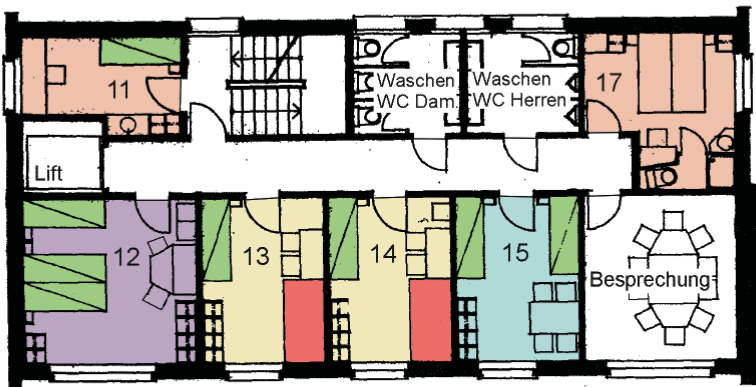


JUGENDHAUS 4 total 46 Betten / rollstuhlgängig

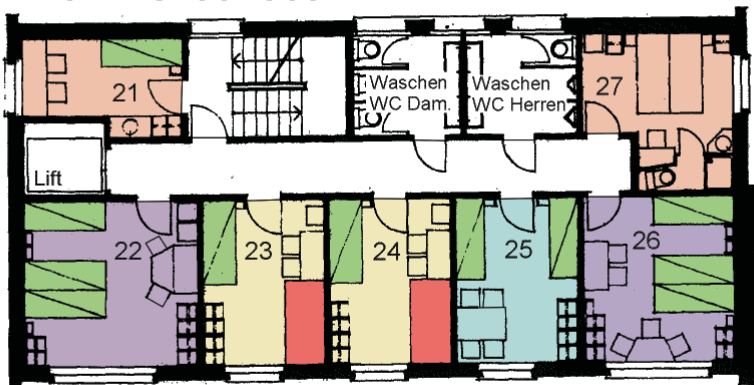
ERDGESCHOSS



1. OBERGESCHOSS 20 Betten



2. OBERGESCHOSS 26 Betten



- 2-Bett-Zimmer
- 3-Bett-Zimmer
- 4-Bett-Zimmer
- 6-Bett-Zimmer
- Kajütenbett
- Behindertenbett

11 _____

12 _____

13 _____

14 _____

15 _____

17 _____

21 _____

22 _____

23 _____

24 _____

25 _____

26 _____

27 _____